

## **Aotearoa New Zealand Virtual Health Information Network for Horizon Europe partnerships**

### **Contact:**

The Virtual Health Information Network (VHIN) is a source of potential research partners for Horizon Europe projects.

VHIN Executive members can:

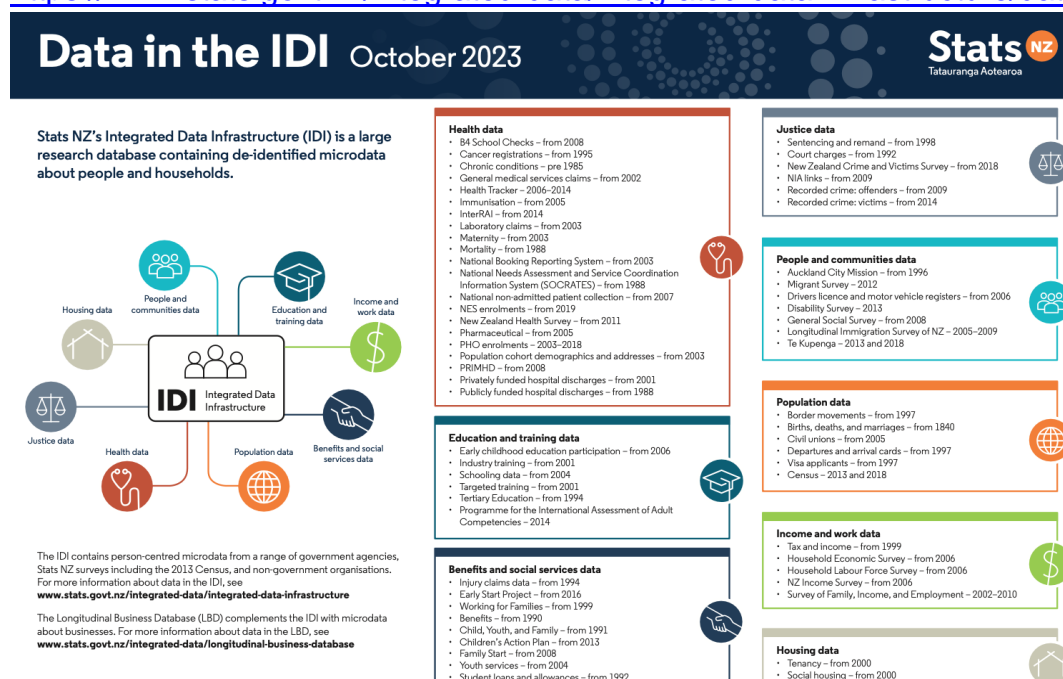
- Collaborate with EU research partners who access comprehensive social, health, wellbeing and business-related data to support policy development and evaluation and also develop data-centric tools for public good.
- Offer a route to collaboration and engagement with other key stakeholders, including government agencies, researchers, policymakers, and technology partners.
- Provide consultancy for technical support and guidance to research partners throughout the data utilization process, ensuring compliance with regulatory requirements and ethical standards.

The VHIN supports and contributes to high-quality research using linked data, including the StatsNZ Integrated Data Infrastructure (IDI) and the Longitudinal Business Database (LBD). The IDI is a 'whole nation' research database containing linkable de-identified microdata about individual New Zealanders and households (IDI; see figure 1). The LBD contains de-identified data about New Zealand businesses, including Linked Employer-Employee Databases, which come from a range of government agencies and Stats NZ surveys.

As an open collaboration of researchers, analysts and professionals, the VHIN is interested in health and social data research that generates insights that will improve the health and wellbeing of all New Zealanders. The VHIN also aims to build capacity and capability, create easily accessible resources, support open sharing of code and resources, contribute to improved data quality, and undertake high quality research using the IDI. VHIN resources are accessible via the public website (<http://www.vhin.co.nz>) and within the StatsNZ data infrastructure. Members (n=298) can interact with the VHIN via the VHIN Facebook web page: <https://www.facebook.com/groups/1658066281071881>

## Figure 1 Data in the Integrated Data Infrastructure

<https://www.stats.govt.nz/integrated-data/integrated-data-infrastructure/data-in-the-idi>



The network members have expertise in data security and privacy including robust security measures and privacy standards to safeguard sensitive information. The VHIN fosters collaborative and people-centric health and social care data environments.

The network contributes to the country's broader health and social development strategies by leveraging national data resources to monitor and research population health and social wellbeing trends, address cross-sectoral and longitudinal questions, and inform policy decisions while enhancing research capabilities.

### Members:

**Prof. Colin Simpson (Te Herenga Waka | Victoria University of Wellington)**

<https://people.wgtn.ac.nz/colin.simpson/about>

**Dep. Director Lisa Meehan (Auckland University of Technology)**

<https://academics.aut.ac.nz/lisa.meehan>

**Assoc. Prof. Barry Milne (Waipapa Taumata Rau | University of Auckland)**

<https://profiles.auckland.ac.nz/b-milne>

**Bradley Drayton (Waipapa Taumata Rau | University of Auckland)**

<https://profiles.auckland.ac.nz/brad-drayton/about>

**Dr Tom Elliott (iNZight Analytics & University of Auckland)**

<https://inzight.co.nz/team/tom> | <https://profiles.auckland.ac.nz/tom-elliott>

**Dr Andrea Teng (Te Whare Wānanga o Otāgo | University of Otago)**

<https://www.otago.ac.nz/wellington/departments/publichealth/staff/andrea-teng-department-of-public-health>

**Assoc. Prof. Gabrielle Davie (Te Whare Wānanga o Otāgo | University of Otago)**

<https://www.otago.ac.nz/healthsciences/expertise/profile?id=792>

**Assoc. Prof. Andrew Sporle (iNZight Analytics & University of Auckland)**

<https://inzight.co.nz/team/andrew-sporle> | <https://www.linkedin.com/in/andrew-sporle>

**Prof. Jeroen Douwes (Massey University, Wellington)**

<https://www.massey.ac.nz/massey/expertise/profile.cfm?stref=410830>